

Statement of Qualifications

Industrial Hygiene & Environmental Consulting



Providing Solutions

Environmental Consultants

2430 University Blvd. West
Jacksonville, Florida 32217
904-731-0241
atlasjax@bellsouth.net

1220 Edgewater Drive, Ste 10
Orlando, Florida 32804
407-425-5696
atlasscientific@cfl.rr.com

TABLE OF CONTENTS

I. Corporate Profile

- ◆ History / Introduction
- ◆ Offices / Locations
- ◆ Corporate Organization
- ◆ Representative Clients

II. Services

- ◆ Industrial Hygiene
- ◆ Environmental
- ◆ Engineering
- ◆ Program Management / Special Support

III. Representative Projects

IV. In-House Laboratory

- ◆ Bulk Material – Asbestos (PLM)
- ◆ Air – Asbestos (PCM)
- ◆ Air – Mold (Air-O-Cell)
- ◆ Surface – Mold



CORPORATE PROFILE

Orlando 407.425.5696

Jacksonville 904.731.0241



© All rights reserved. No part of this work may be reproduced without the written permission of ATLAS Scientific Technologies, Inc., except for use at the single facility and by the party for who it was provided.

CORPORATE PROFILE

History / Introduction

ATLAS Scientific Technologies, Inc. was founded in 1992 on the basic principal of providing quality environmental services that are responsive to the needs of the client. ATLAS has developed into a full-service consulting firm with fully staffed offices in Orlando and Jacksonville, Florida.

Our services encompass a wide range of technical areas corresponding to the diverse expertise of our staff members. **ATLAS'** full-time in-house staff includes:

- ✚ In-House NVLAP Accredited Laboratory – PLM & PCM
- ✚ DBPR-Approved Asbestos Training Provider
- ✚ Certified Industrial Hygienists (CIH)
- ✚ ABIH Indoor Environmental Quality Sub-specialty
- ✚ Licensed Asbestos Consultants (LAC)
- ✚ Florida Registered Professional Engineers (PE)
- ✚ Beryllium Consultant Network Member
- ✚ Staff Chemists and Industrial Hygienists
- ✚ EPA / AHERA Asbestos Abatement Designers
- ✚ EPA / AHERA Management Planners
- ✚ EPA / AHERA Contractor / Supervisors
- ✚ EPA / AHERA Inspectors
- ✚ Certified NIOSH 582 - Airborne Asbestos Accredited Sampler / Analyst
- ✚ Lead Inspector: EPA (Target Housing & Child-Occupied Facilities)
- ✚ Lead Risk Assessor: EPA (Target Housing & Child-Occupied Facilities)
- ✚ OSHA 1910.120 - 40-Hour Hazardous Waste Site Worker

The diversity of our staff and the depth of experience allow **ATLAS** to routinely provide three general disciplines of services. These divisions are further divided into the specific technical disciplines that make up seven service sections. The divisions and service sections include:

Orlando 407.425.5696

Jacksonville 904.731.0241



Providing Solutions

CORPORATE PROFILE

Services

1. Industrial Hygiene Division

- ◆ Asbestos Services Section
- ◆ Industrial Hygiene Services Section
(Including Fungal / Microbial Assessments)

2. Environmental Division

- ◆ Environmental Studies Section
- ◆ Engineering Section

3. Program Management / Special Support Division

- ◆ Programs and Database Development Section
- ◆ Litigation and Expert Witness Section
- ◆ Public and Employee Relations Section.

An overview of the services provided by each of these sections is presented in Section II.

Orlando 407.425.5696

Jacksonville 904.731.0241



Providing Solutions

CORPORATE PROFILE

Offices / Locations

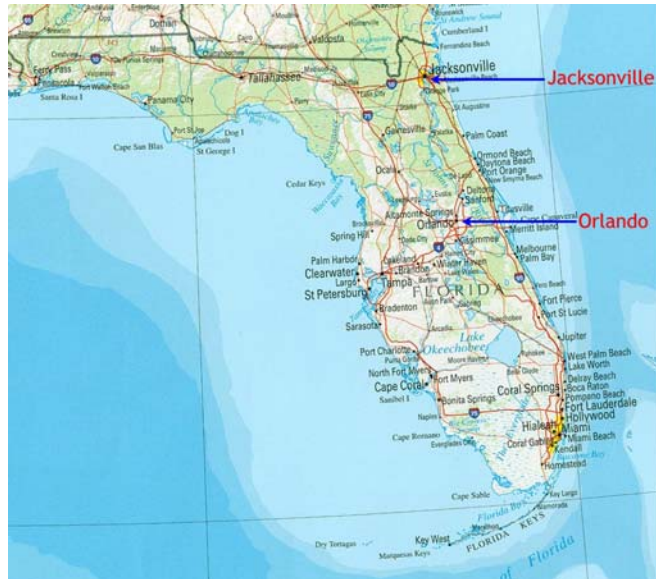
ATLAS Scientific Technologies, Inc. currently maintains fully staffed offices in Jacksonville and Orlando, Florida.

JACKSONVILLE

2430 University Blvd. West
Jacksonville, Florida 32217
Phone: 904.731.0241
Fax: 904.731.0242
Email: atlasjax@bellsouth.net

ORLANDO

1220 Edgewater Drive
Suite 10
Orlando, Florida 32804
Phone: 407.425.5696
Fax: 407.425.0113
Email: atlasscientific@cfl.rr.com



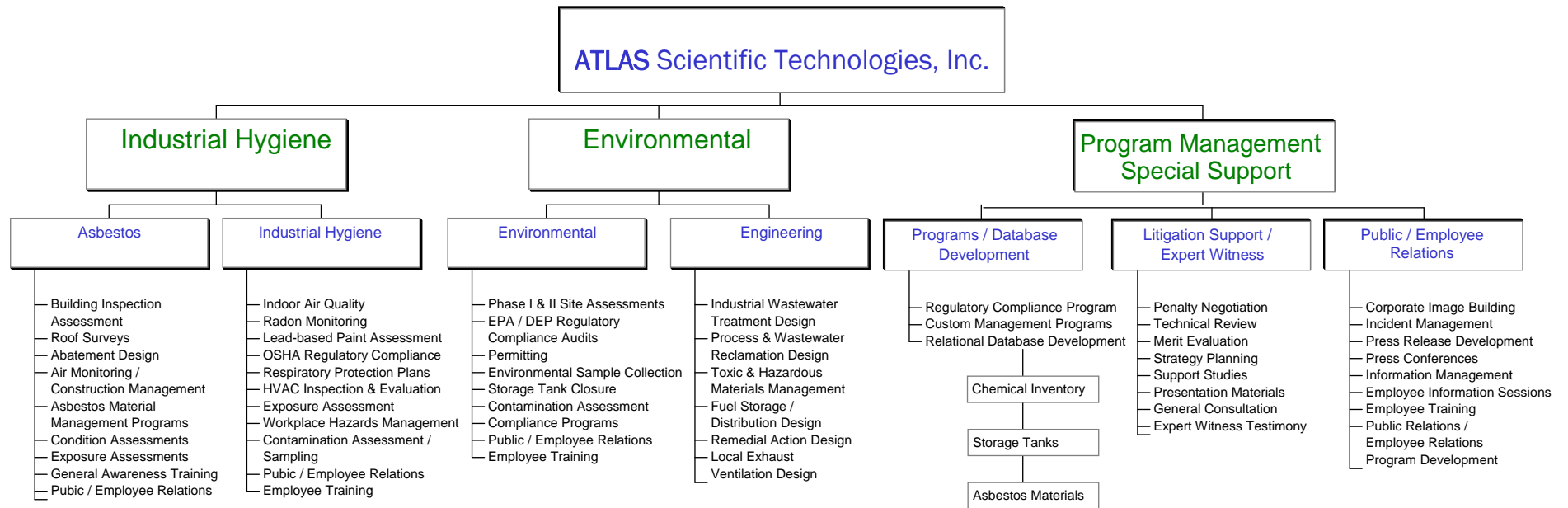
Orlando 407.425.5696

Jacksonville 904.731.0241



Providing Solutions

Corporate Organization



CORPORATE PROFILE

REPRESENTATIVE CLIENTS

Architect / Engineer

- American Environmental Network
- Architectural Design Associates, Inc.
- BKM
- BRPH
- CEI Engineering
- Cross Environmental Services
- ERM Southeast
- Ellis and Associates
- Environmental Science & Engineering
- Flad & Associates
- Florida Environmental Compliance Corporation
- Fred Wilson & Associates, Inc.
- Gee & Jenson Engineers
- Gobbell Hays Partners
- Hartman & Associates
- HSA Golden
- HWH Architects, Engineers, Planners
- Hyperion Group
- Ingley, Campbell, Moses & Assoc.
- Jacksonville Land Formations
- KBJ Architects, Inc.
- Nodarse & Associates, Inc.
- Paryani Engineers
- PM&A Consulting Engineers
- Paryani Engineers
- Ponikvar & Associates
- Qore Property Sciences
- R.W. Beck
- Reynolds, Smith & Hill
- Rust Environmental
- United Consulting
- W.W. Gay

Attorney / Expert Witness

- Akel, Logan and Schaefer
- Anderson & Howell
- Brennan, Manna & Diamond

- Brown, Terrell and Hogan
- Burge & Burge
- Butler, Burnette, Pappas LLP
- Dade County Attorney's Office
- Deciccio & Johnson
- Foody, Alan M
- Greenberg Traurig, LLP
- Holland & Knight
- Jacobs & Associates
- Kingsford & Rock, PA
- Kubicki Draper, PA
- Lee, Brack, Hart & Rouse
- Mitchel & Associates, Inc.
- Parrish & Fredericksen
- Rissman, Weisberg, Barrett, Hurt, et al
- Rywant, Alvarez, Jones, Russo & Guyton
- Sands, White & Sands, P.A.
- Schutt, Humphries, Schmidt & Burnett
- Vasquez & Tosco, LLP
- Wettermark and Holland
- Whittaker, Stump, Webster & Miller

Automotive

- Darby Buick
- Dollar Rent A Car
- Greater Orlando Auto Auction
- Penske Truck Leasing
- UPS Trucking, Inc.

Commercial

- All Pool Service & Supply, Inc.
- AM PAM J.A. Croson Company
- Anderson & Howell

Orlando 407.425.5696

Jacksonville 904.731.0241



Providing Solutions

CORPORATE PROFILE

REPRESENTATIVE CLIENTS

- Big-10 Tires
- Brinks Orlando
- Corim Laura Street, Limited
- CSX Transportation
- Dual Incorporated
- Dura-Stress, Inc.
- Edward Jones Company
- Edyth Bush Charitable Foundation
- First Presbyterian Church of Orlando
- FritoLay
- Gate Petroleum
- Grand Avenue Economic Commission
- Greater Orlando Aviation Authority
- Greyhound Lines, Inc.
- Irvine Mechanical
- Johns Manville
- Kaiser Management
- Keeter Equipment Company
- Lan Associates, Inc.
- Lennar Homes, Inc.
- Marineland of Florida
- MCI Telecommunications
- Pinnacle Corporation
- Sea World
- Signature Flight Support
- Sprint / Nextel
- The Phylmar Group, Inc.
- The Klein Company
- USAir
- U.S Inspect
- Coastal Reconstruction, Inc.
- Construction Solutions
- Cross Construction Company
- Cross Environmental
- Darco Environmental
- DEL-JEN International Corp
- DPC General Contractors
- EMCON
- Emergency Response Remediation Services
- Environics Division
- E.S. Boney & Associates, Inc.
- Fleet & Associates
- George Sharp, Inc.
- Georgia Restoration Management, Inc.
- HARMAC, Inc.
- ICI Homes
- Kajima Construction Services
- Keller Outdoor
- Kenyon Company
- Kvaerner
- Lang Environmental
- MacEast Construction
- Moran Environmental/JENSCO / ERG
- Merit Abatement
- Marcor Remediation
- Mil-Con Electric Company
- Paul Davis Restoration
- Perry-Parrish
- Pioneer Construction
- Ratcliff Construction, Inc.
- Waller Construction
- W. W. Gay

Contractor

- American Construction & Environmental Services
- American Testing Labs, Inc.
- Amsec LLC – Mayport Division
- Burns Brothers
- Certified Environmental, Inc.

Orlando 407.425.5696

Jacksonville 904.731.0241



Providing Solutions

CORPORATE PROFILE

REPRESENTATIVE CLIENTS

Federal / DOD / Military

- Department of Homeland Security
- Department of Military Affairs
- Department of Veteran's Affairs
- Federal Aviation Administration
- Federal Reserve Bank
- McDonnell Douglas Missile Systems
- Military Entrance Processing Station (MEPS)
- NASA – Kennedy Space Center
- Norfolk Naval Shipyard
- Northrop Grumman Corporation
- McDonnell Douglas Missile Systems
- US Air Force
- US Army Corps of Engineers
- US Department of Labor
- US Navy
- US Postal Service

Hospital

- Baptist Medical Center
- Health Center at Brentwood
- Jacksonville Convalescent Center
- Mayo Clinic
- St. Vincent's Medical Center
- VA Medical Center

Industrial – Manufacturing

- Addison Products Company
- Air Products & Chemicals
- Anchor Glass Container Corp
- Anheuser Busch
- Atlas Roll-Lite Doors
- Avery Dennison
- BCB Industries, Inc
- C.F. Gomma
- Coca Cola Company
- GGB Industries

- General Electric
- Harris Semiconductor
- McKinna Corporation
- PCC Air Foils
- Rinker Materials Corporation
- Tenneco Packaging
- Universal Petroleum
- US Gypsum

Insurance

- Allstate Insurance
- Allied Adjusting, Inc.
- American Strategic Insurance
- Amica Insurance
- Auto Owners Insurance
- Blue Cross Blue Shield of Florida
- Encompass Insurance
- Farm Bureau
- Farmers Insurance
- Florida Farm Bureau
- Hanover Insurance
- Insurance Advantage
- Liberty American Insurance
- Nationwide Insurance
- Premier Adjustment Services
- Prudential Insurance
- Re/Max Executive Group
- Safeco Insurance Company
- State Farm Insurance
- USAA Casualty Insurance Company

Municipal

- City of Jacksonville
- City of Jacksonville Beach
- City of Key West
- City of Lauderhill - DEES
- City of St. Augustine
- City of Vero Beach

Orlando 407.425.5696

Jacksonville 904.731.0241



Providing Solutions

CORPORATE PROFILE

REPRESENTATIVE CLIENTS

- Dade County Aviation Department
- Duval County Solid Waste
- Jacksonville Electric Authority
- Jacksonville Port Authority
- Macclenny Housing Authority
- Nassau County Coordinator
- Orange County Public Utilities
- Orange County Risk Management
- Palatka Housing Authority
- Seminole County

Property Management

- Commercial Realty Consultants, Inc.
- Dr. Phillips, Inc.
- Flagship Property Management
- Florida Growth Services
- Glen Springs Manor Apartments
- Grand Avenue Economic Community Development
- J.A. Jones Management Services
- Luxury Builders
- NTM Homes
- Property Ventures, LLC
- Real Estate Mortgage International Corp
- Regency Realty Corporation
- ReMax Executive Group
- Satellite Properties
- Trammell Crow Residential Services
- Suddath Companies
- United Consulting
- U.S. Inspect, Inc.
- Walden Residential Properties

Public Schools

- Blue Lake Academy
- Bradford County Public Schools
- Duval County Public Schools

- Seminole County Public Schools
- St. Johns County Public Schools

State Agencies

- Florida Department of Corrections
- Florida Department of Environmental Protection
- Florida Department of Natural Resources
- Florida Department of Transportation
- GSA Miami Service Center

Universities / Colleges

- Embry Riddle Aeronautical University
- Florida Community College Jacksonville
- Rollins College
- University of Florida

Utilities / Power Generation

- City Electric System
- City of Key West / Stock Island Power Plant
- Fort Pierce Utilities Authority
- Gainesville Regional Utilities
- Jacksonville Electric Authority
- Line Power
- Mil-Con Electric Company

Orlando 407.425.5696

Jacksonville 904.731.0241



Providing Solutions



SERVICES

Orlando 407.425.5696

Jacksonville 904.731.0241



Providing Solutions

© All rights reserved. No part of this work may be reproduced without the written permission of ATLAS Scientific Technologies, Inc., except for use at the single facility and by the party for who it was provided.

SERVICES – ASBESTOS

Asbestos

- ✦ Building Inspection / Assessment (AHERA)
- ✦ Condition Assessments
- ✦ Exposure Assessments
- ✦ Asbestos Material Management Programs
- ✦ Asbestos Materials Management Database
- ✦ Abatement Design
- ✦ Air Monitoring / Construction Management
- ✦ Asbestos Training
- ✦ Employee Public Relations
- ✦ Litigation Support and Expert Witness



Orlando 407.425.5696

Jacksonville 904.731.0241



Providing Solutions

© All rights reserved. No part of this work may be reproduced without the written permission of ATLAS Scientific Technologies, Inc., except for use at the single facility and by the party for who it was provided.

SERVICES – INDUSTRIAL HYGIENE

Industrial Hygiene

- ✚ Indoor Air Quality Investigations
- ✚ Mold - Fungal / Microbial Investigations / Inspections / Sampling and Remediation Work Plans
- ✚ OSHA Regulatory Compliance
- ✚ HVAC Inspection & Evaluation
- ✚ Respiratory Protection Plans
- ✚ Lead-based Paint Assessment / Sampling
- ✚ Noise Level Testing
- ✚ Chemical & Biological Exposure Assessment
- ✚ Air Sampling & Analysis
- ✚ Risk Assessment
- ✚ Workplace Hazards Assessment & Management Programs
- ✚ Chemical Products Inventory Database
- ✚ Litigation Support & Expert Witness
- ✚ Employee / Public Relations
- ✚ OSHA Training, Respirators, PCBs, Confined Space & others



Orlando 407.425.5696

Jacksonville 904.731.0241



Providing Solutions

SERVICES - ENVIRONMENTAL

Environmental

Regulatory Compliance & Permitting

- ✚ EPA, DER Regulatory Compliance Audits
- ✚ NPDES & other Regulatory Permitting
- ✚ Regulatory Penalty Negotiation
- ✚ SPCC Plans
- ✚ Storm Water Design & Permitting
- ✚ Storage Tank Compliance Programs



Field Sampling / Site Studies

- ✚ ESA - Phase I & Phase II Environmental Site Assessments
- ✚ Environmental Sample Collection (approved ComQAP)
- ✚ Contamination Assessment
- ✚ Storage Tank Closure / Contamination Assessment

Orlando 407.425.5696

Jacksonville 904.731.0241



Providing Solutions

SERVICES - ENGINEERING

Engineering

- ✚ Process and Wastewater Reclamation Design
- ✚ Toxic & Hazardous Materials Management
- ✚ Remedial Action Design
- ✚ Local Exhaust Ventilation Design Industrial Wastewater Pilot Studies
- ✚ Employee / Public Relations
- ✚ Employee Training



Orlando 407.425.5696

Jacksonville 904.731.0241



Providing Solutions

© All rights reserved. No part of this work may be reproduced without the written permission of ATLAS Scientific Technologies, Inc., except for use at the single facility and by the party for who it was provided.

SERVICES – PROGRAM MANAGEMENT / SPECIAL SUPPORT

Programs / Public Employee

Programs / Database

- ✚ Regulatory Compliance Programs
- ✚ Custom Management Programs
- ✚ Relational Database Development
 - ◆ Chemical Inventory
 - ◆ Storage Tanks
 - ◆ Asbestos Materials
 - ◆ Others

Building No	Material ID	Description	Quantity	Status	Location	Notes
101	101-01	Asbestos (Serpentine)	1000	Inventory	Warehouse A	
102	102-01	Asbestos (Amphibole)	500	Inventory	Warehouse B	
103	103-01	Asbestos (Mixed)	250	Inventory	Warehouse C	

Public / Employee Relations Development

- ✚ Corporate Image Building
- ✚ Incident Management
- ✚ Press Release Development
- ✚ Press Conferences
- ✚ Information Management
- ✚ Employee Information Sessions
- ✚ Employee Training

Orlando 407.425.5696

Jacksonville 904.731.0241



Providing Solutions

SERVICES – PROGRAM MANAGEMENT / SPECIAL SUPPORT

Litigation / Expert Witness

- ✚ Penalty Negotiation
- ✚ Technical Review
- ✚ Merit Evaluation
- ✚ Strategy Planning
- ✚ Support Studies
- ✚ Presentation Materials
- ✚ General Consultation
- ✚ Expert Witness Testimony



Orlando 407.425.5696

Jacksonville 904.731.0241



Providing Solutions

© All rights reserved. No part of this work may be reproduced without the written permission of ATLAS Scientific Technologies, Inc., except for use at the single facility and by the party for who it was provided.



REPRESENTATIVE PROJECTS

Orlando 407.425.5696

Jacksonville 904.731.0241



Providing Solutions

© All rights reserved. No part of this work may be reproduced without the written permission of ATLAS Scientific Technologies, Inc., except for use at the single facility and by the party for who it was provided.

REPRESENTATIVE PROJECTS

Asbestos

A brief list of asbestos projects completed by **ATLAS** is provided below.

<i>Client / Location</i>	<i>Services Provided</i>
U.S. Gypsum Jacksonville, Florida	Comprehensive Asbestos Consulting - Conducted a comprehensive, facility wide survey of asbestos-containing building materials at the U.S. Gypsum plant located in Jacksonville, Florida. The survey parameters included 28 separate buildings (over 912,000 square feet), and the collection and analysis of over 650 bulk material samples.
City of Key West Stock Island & Key West, Florida	Served as asbestos, lead paint and environmental health consultant for decommissioning of the Historic Power Plant. Provided asbestos, lead paint, petroleum and other industrial hygiene inspections of the 120,000 square foot facility and two support buildings. Developed abatement designs for asbestos, lead paint, petroleum and biological agents. Conducted contractor supervision, air sampling, final inspection and clearance sampling for all abatement activities.
Orange County Orange County, Florida	Term Contract for comprehensive asbestos services for over 60 asbestos surveys and abatement projects including in excess of 30 residences in support of property acquisitions and demolitions
Flagship Property Management North Florida	Provided Asbestos Consulting Services for over five years. Conducted asbestos surveys of occupied, multi-building HUD housing complexes, asbestos abatement support services, development of operations and maintenance plans, asbestos awareness training, and asbestos emergency response services.
Bradford County School Board Bradford County, Florida	Provided Asbestos Hazard Emergency Response Act (AHERA) three (3) year re-inspections on all of the school board's facilities. Included a complete review of all existing AHERA documentation and the re-assessment of all previously known or assumed, friable and non-friable, asbestos-containing building materials (ACBM). Also included a visual and physical re-assessment of material condition to determine the potential for changes in friability as well as a complete sampling of all formerly assumed ACBM.
Fred Wilson & Associates Kennedy Space Center Cocoa, Florida	Provided comprehensive asbestos consulting services in support of electrical system upgrades throughout the Kennedy Spaces Center, including fire alarm systems and low voltage electrical systems. The work was on a quick-turn around schedule and met the changing needs of this large facility. The facilities observed encompassed over 800,000 square feet floor area.

Major asbestos projects completed by **ATLAS** follows.

Orlando 407.425.5696

Jacksonville 904.731.0241



Providing Solutions

REPRESENTATIVE PROJECTS

Asbestos



UNIVERSITY OF FLORIDA Comprehensive Asbestos Consulting

ATLAS provided comprehensive asbestos consulting services to the University of Florida on an annual contract basis (indefinite term). Many of the services were provided in support of renovation activities, unscheduled building system maintenance or repairs. ATLAS services several distinct operational entities on the University campus including the Physical Plant Division, the Institute of Food and Agricultural Sciences, the John Hillis Miller Health Sciences Center (with Shands Hospital) and the Campus Planning and Construction Management Department. ATLAS **designed asbestos abatement specifications** and **provided air monitoring and project supervision** for several large scale abatement projects at the University including the following:

1. Various Steam Tunnel Projects

ATLAS designed and developed several independent asbestos abatement projects addressing Thermal Systems Insulation (TSI) located in underground steam tunnels totaling over 4,500 linear feet across the campus. The projects have been conducted over a two-year period on an "as available" basis. Auxiliary issues associated with the asbestos abatement include confined space issues and heat stress.

2. Dental Science Building

ATLAS conducted several large-scale asbestos abatement projects in support of the ongoing renovation of the 200,000 square foot Dental Science Building. To date ATLAS has managed projects totaling 73,000 square feet. All of the projects have been conducted within an occupied building permitting the normal flow of operations in the adjacent spaces while maintaining access to mission critical equipment located within the work area as needed.

3. Medical Science Building

The project consisted of the phased renovation of three floors (approximately 150,000 square feet) of the Pharmacy Wing. Services entailed a detailed asbestos material survey, development of a technical abatement specification, air monitoring and project supervision. The project was conducted within an occupied building.

4. General Services Building, Communicore, Human Development Center

ATLAS provided comprehensive asbestos services for numerous projects within the JHM Health Sciences Center in support of ongoing renovation activities. These projects address the renovation of existing office / laboratory spaces, upgrading of support services, as well as mechanical and electrical equipment upgrade and installation.

ATLAS designed over 100 abatement projects including numerous other smaller scale asbestos projects throughout the University's facilities.

Orlando 407.425.5696

Jacksonville 904.731.0241



Providing Solutions

REPRESENTATIVE PROJECTS

Asbestos



ORANGE COUNTY Comprehensive Asbestos, Lead & Radon Consulting

ATLAS served as Orange County's Consultant under a term contract for "Asbestos, Lead and Radon Consulting Services" for two years. During that period, ATLAS conducted and/or provided comprehensive services for over 60 asbestos surveys and abatement projects.

ATLAS prepared numerous asbestos abatement specifications and work plans for select areas that required specific action to address emergency response situations and routine operation and maintenance activities including:

1. **Orange County Courthouse Complex**

Numerous asbestos related projects were conducted in the 3-building complex encompassing more than 250,000 square feet. An example project was the annual asbestos-containing material condition assessment of the Orange County Courthouse Tower Building. The condition assessment provided verifiable photographic documentation of material condition and recommendations for operation and maintenance activities.

2. **Orange County Courthouse Tower HVAC Duct Cleaning**

This high profile HVAC renovation project included designing a method to provide safe duct entry and isolation points throughout asbestos-contaminated ceiling plenums of an 11-story building. The work was conducted entirely during "off hours" providing uninterrupted use of the courthouse during normal daily operations. In addition to the design, ATLAS coordinated all efforts between the mechanical and abatement contractors and conducted daily air monitoring and clearance of the work areas.

3. **Tower Building, floors 2, 4 and 9 - Abatement**

This project entailed the design, abatement and cleanup of damaged and delaminated spray-applied fireproofing. The project was conducted within occupied spaces and designed to allow normal daily operation to continue during the 5-week duration.

Additionally, ATLAS conducted asbestos general awareness and training sessions, prepared detailed written reports and presented findings to administration and employee groups in interactive sessions. ATLAS assisted the County in the development and implementation of a public/employee relations program dealing with asbestos and indoor air quality issues.

Orlando 407.425.5696

Jacksonville 904.731.0241



Providing Solutions

REPRESENTATIVE PROJECTS

Asbestos



HARRIS SEMICONDUCTOR (INTERSIL CORP) Comprehensive Asbestos Consulting

ATLAS Scientific Technologies, Inc. conducted a comprehensive, facility wide survey of asbestos-containing building materials at the Harris Semiconductor plant located in Melbourne, Florida. ATLAS mobilized two (2) inspection teams to the site and conducted the fieldwork within 10 days. At the Client's request, all fieldwork was conducted after the normal plant working hours. The study included:

- 17 buildings totaling over 950,000 square feet
- over 800 bulk material samples were collected.

ATLAS prepared an all-encompassing report consisting of a compilation of complete, individual reports for each building. Each report included:

- tabular information describing all materials sampled and all materials determined to contain asbestos
- CADD drawings of each individual building graphically detailing the sample collection locations
- analytical results
- material quantities
- operation and maintenance (O&M) recommendations.

Each individual building report is a complete, stand-alone document that may be removed from the main report binder and easily taken into the field.

Additionally, ATLAS prepared a relational database in a Microsoft Access format. The database relates specific information regarding the asbestos-containing materials to their individual locations within rooms in a given building. This allows Harris Environmental Health and Safety staff members to instantly retrieve information including:

- the materials sampled in a given area of interest
- determination of asbestos content
- material quantities
- physical description
- O&M recommendations.

ATLAS also provided training on the proper operation and the effective use of the database.

Orlando 407.425.5696

Jacksonville 904.731.0241



Providing Solutions

REPRESENTATIVE PROJECTS

Asbestos



NORTHROP GRUMMAN OF ST. AUGUSTINE Comprehensive Asbestos Consulting

ATLAS provided comprehensive asbestos consulting services to the Northrop Grumman Corporation on a renewable term annual contract. The services include:

- asbestos-containing material surveys customized to the needs or protocols of the individual circumstances
- preparation of technical abatement specifications with detailed construction drawings
- asbestos abatement work plans
- project monitoring / contractor supervision
- air monitoring / final clearance

Select example projects are detailed below.

Environmental Due Diligence Survey Naval Air Station Cecil Field

The project consisted of a comprehensive asbestos, lead-based paint, lead in drinking water and radon survey. The study site included the survey of six (6) individual facilities, comprising approximately 220,000 square feet, and the collection of 175 samples in support of Northrop Grumman relocating personnel to these areas.

ATLAS mobilized an inspection team to the site and performed the fieldwork within four (4) days. Upon completion of the field effort ATLAS prepared a comprehensive report for each individual facility.

Asbestos Abatement Naval Air Station Cecil Field

The project consisted of the preparation of a complete asbestos abatement technical specification with associated drawings for the asbestos abatement of a 15,000 square foot facility. The specification addressed all of the requirements and language of the US Navy's Master Asbestos Specification. ATLAS provided total asbestos project management services. The project required asbestos abatement contractor supervision, air sampling, review of contractor submittals and interface between the Contractor, Client and US Navy Base Realignment and Closure Commission.

Orlando 407.425.5696

Jacksonville 904.731.0241



Providing Solutions

REPRESENTATIVE PROJECTS

Industrial Hygiene

A brief list of industrial hygiene projects completed by **ATLAS** is provided below.

<i>Client / Location</i>	<i>Services Provided</i>
Department of Homeland Security Glynco, Georgia	IAQ Consultant regarding the evaluation of the 125,000 sq ft Admin building. The project included consulting with the client regarding operational consideration, IAQ security issues and building vulnerability to airborne contaminants. Assisted in the design and executed the baseline study including in-situ monitoring for carbon dioxide, carbon monoxide, hydrogen sulfide, temperature and relative humidity. Samples were also collected and analyzed for pesticides, formaldehyde, volatile organics, dust mites, bacteria and fungal spores.
PCC Air Foils Douglas Georgia	Provided representative air sampling data (exposure assessment) for employees performing work in various departments with regard to potential product related contaminants. Air samples included Cobalt, Nickel, Chromium, Aluminum Oxide, Xylene, Ethel Benzene, Solvent Naptha, Freon, crystalline silica, amorphous silica abietic acid, respirable dust and 2-ethyl Hexanol. Samples were collected, analyzed and compared to current regulatory standards in order to evaluate compliance.
Orange County	Term contract required responding to all the County's IH and IAQ needs including investigations, HVAC system inspection, air sampling and other testing, reporting, remedial design, public / employee relations and general consulting to Orange County administration, Risk Management, facilities and legal departments. Conducted over 20 IH/IAQ projects at different County facilities.. The services included IAQ investigations and assisting the county in the development of administrative and legal strategies regarding IAQ issues and management.
Sprint / Nextel	IAQ and environmental consultant for all southeastern facilities. Conducted IAQ studies at several customer service centers and numerous computer and communication nerve centers. Studies included conducting occupant interviews, sample collection and analysis, moisture monitoring, HVAC inspection, building operation and design review. During the hurricane season of 2004, ATLAS provided services on an emergency on-call basis to evaluate the impact of storm damage on building envelope. Provided corrective action recommendation to assure safe occupancy so that the general operations of the facility could be conducted and development of remedial action designs and implementation.

Major industrial hygiene projects completed by **ATLAS** follows.

Orlando 407.425.5696

Jacksonville 904.731.0241



Providing Solutions

REPRESENTATIVE PROJECTS

Industrial Hygiene



UNIVERSITY OF FLORIDA Comprehensive Industrial Hygiene Consulting

ATLAS provided Industrial Hygiene services to the University of Florida under an indefinite term contract. ATLAS assisted the University's Environmental Health and Safety Department in the development and implementation of their current guideline document, "**Indoor Environmental Quality Commissioning for New Construction and Renovation**".

ATLAS conducted several of the indoor air quality (IAQ) studies involved with the commissioning of new and/or renovated buildings on campus. The projects consist of 3 phases in which separate IAQ parameters were evaluated, and their impact on the building and its inhabitants assessed. The three test events included the pre-occupancy study, the one-month post occupancy study and the one-month pre-warranty expiration study. Select example projects are detailed below.

Engineering Building - IAQ Study

The project consisted of the Baseline Commissioning study of the newly constructed 3-story **150,000 square foot facility**. Each of the sample events required the collection of 51 sample sets located in **17 air handler zones**. Sample parameters included formaldehyde, total organic vapors, nuisance dust, bioaerosols, radon and continuous monitoring of the basic IAQ parameters of temperature, humidity and carbon dioxide.

AeroDome / O'Connell Center - IAQ Post-fire Study

The project consisted of an Industrial Hygiene evaluation of the facility's HVAC system during renovation, after a fire. The evaluation entailed a walk-through visual inspection of the main perimeter supply ducts, the lower and upper terminus of the supply risers and the fresh air intakes. Microvacuum dust samples were collected and analyzed to determine the presence of low temperature combustion byproducts.

Gator Corners (Food Service Building) - IAQ Study

The project consisted of an IAQ investigation of a **35,000 square foot facility**. Services consisted of a complete visual inspection of the facility's air handler units including fresh air intakes and ducts, collection of airborne and bulk **microbiological samples** and evaluation of the basic IAQ parameters. ATLAS has conducted **over 22 IAQ projects** in support of the University's Environmental Health and Safety Department.

Orlando 407.425.5696

Jacksonville 904.731.0241



Providing Solutions

REPRESENTATIVE PROJECTS

Industrial Hygiene



JACKSONVILLE ELECTRIC AUTHORITY (JEA) Industrial Hygiene / Environmental Services

ATLAS served as industrial hygiene / environmental services consultant to Jacksonville Electric Authority (JEA) under a five year term contract. This contract requires responding to all of JEA's IH, IAQ and environmental service needs including investigations, HVAC system inspection, air sampling and other testing, reporting, remedial design, public / employee relations and general consulting to JEA Health and Environmental Safety personnel.

Emergency Response

ATLAS provides services on a 24-hour on-call basis. Concerns regarding health, safety and environmental issues must be addressed in a responsive and effective manner to assure that potential exposure is limited and the issues do not result in unwarranted reactions or down time for any production units. ATLAS has provided air sampling for asbestos, lead, arsenic, silica and organic solvents on an emergency basis to evaluate the potential for exposure and provide guidelines regarding cleanup.

OSHA Compliance Monitoring

ATLAS has worked with JEA personnel to identify potential occupational exposure issues and production areas that may need to be monitored. The OSHA requirements were evaluated and area-specific sampling plans were developed. Personal monitoring (8hr-TWA and short term) and area evaluation were conducted for lead, arsenic, silica, respirable and nuisance particulate, mercury, PCBs and other analytes. OSHA documentation and reporting was completed.

Indoor Air Quality

ATLAS has conducted numerous IAQ investigations in maintenance shops, production areas and offices. These investigations have included the collection of samples for biological agents, mold, organic solvents, particulates and metals. Corrective action recommendations including HVAC design modifications, material removal and operational changes have been provided. ATLAS has developed remedial action work plans, supervised contractor activities and conducted area inspections and clearance.

Noise Level Survey

Atlas conducted a noise level survey of the entire North Side generating facility. This included area monitoring of the three floors of the Main turbine building, the rock mill, eleven floors of the steam plant and all support buildings as well as exterior production areas. Additionally, personal noise dosimetry was conducted on representative personnel throughout the Plant.

Orlando 407.425.5696

Jacksonville 904.731.0241



Providing Solutions

REPRESENTATIVE PROJECTS

Industrial Hygiene



VETERANS ADMINISTRATION Indoor Air Quality / Industrial Hygiene Services

ATLAS provided comprehensive industrial hygiene testing and consulting services to assist the VA in defining and resolving IAQ problems. Developed and assisted the VA in the implementation of remedial actions. Services included: interviewing occupants, inspecting HVAC systems, roofing systems, wall cavities and accessible spaces, evaluating operational activities and sampling bulk materials and air for a variety of potential contaminants. ATLAS assisted the VA in addressing actual and potential litigation issues.

Conducted a **comprehensive IH evaluation**, scientific studies and **litigation support services** at the **44,000 s.f. Daytona** facility. The purpose of the investigation was to address employee complaints relating to indoor air quality, determine **occupational stresses** and to provide recommendations regarding corrective actions. The investigation focused on the facility's HVAC system, building envelope, storm water intrusion, roofing system, routine operational activities and basic indoor air quality parameters. The services specifically included:

- *occupant (employee) interviews, occupant information sessions*
- *review of records, building and mechanical plans and MSDS*
- *visual inspection of the HVAC system including 15 air handling units*
- *visual inspection of accessible interior spaces, roofing and wall cavities*
- *extensive indoor air quality sampling for a wide variety of contaminants (microbiological, organics, particulate, fibers)*
- *more than 250 samples collected and analyzed*
- *development of corrective action specification and supervision of remediation contractor*
- *development and implementation of an employee and public relation program.*

All final work products (reports) were reviewed and accepted by the Project Manager, a Department of Veterans Affairs' Industrial Hygienist and legal staff and the National Institute of Occupational Safety and Health (NIOSH). ATLAS' services resulted in the resolution of the IAQ issues and remedial cost savings by identifying other responsible parties such as maintenance contractors, building construction contractors and building design professionals. Additional VA Facilities where ATLAS has conducted similar IAQ Investigations:

- VA Bay Pines Regional Office - 170,000 s.f.
- VA Outpatient Clinic, Fort Myers - 150,000 s.f.
- □□VA Gainesville - 450,000 s.f.

Orlando 407.425.5696

Jacksonville 904.731.0241



Providing Solutions

REPRESENTATIVE PROJECTS

Industrial Hygiene



U.S. GYPSUM Industrial Hygiene / Environmental Services

ATLAS has served as industrial hygiene and environmental consultant to U.S. Gypsum under a renewable contract since 1998. ATLAS has been utilized by U.S. Gypsum to perform the following:

Indoor Air Quality Investigations in Support of Product Development

ATLAS worked with the **USG corporate toxicology department** in the evaluation of model homes containing USG products. **ATLAS** assisted corporate toxicologists in evaluation of product components to determine possible contaminants and off-gas products. Conducted **extensive air sampling** for inorganics, organics and biological agents. Conducted literature research and data evaluation. Provided input regarding reported problems and product modifications.

Property Transfer Audits

Conducted inspections of four buildings located on property adjacent to the U.S. Gypsum facility to determine the **environmental and health hazards** including asbestos, lead paint, radon, PCBs, discarded waste and any other identified concerns. Provided a **turn-key operation** for the removal of identified environmental hazards including the preparation of project specific remediation work plans, securing licensed remediation contractors, performing project supervision and air monitoring, and providing final clearance inspection and testing.

Product Analysis Associated with IAQ Complaints

Provided analytical support and data evaluation for materials collected from buildings with reported indoor air quality complaints. Analyzed materials for fungi, bacteria and various organic byproducts.

Asbestos Material Survey

Conducted a comprehensive, facility wide survey of asbestos-containing building materials at the U.S. Gypsum plant located in Jacksonville, Florida. The survey parameters included **28 separate buildings** (over **912,000 square feet**), and the collection and analysis of over 650 bulk material samples. ATLAS prepared and submitted individual reports for each building to assist in the operations and maintenance program at the facility. The reports contained tabularized results, CADD drawings, analytical results, material quantity estimates and photographs.

Work Area Evaluation

ATLAS has conducted numerous IAQ inspections within office areas and production units. The studies have included HVAC and local exhaust ventilation evaluation, air sampling, results evaluation and remedial action recommendations.

Orlando 407.425.5696

Jacksonville 904.731.0241



Providing Solutions

REPRESENTATIVE PROJECTS

Industrial Hygiene



NORTHROP GRUMMAN OF ST. AUGUSTINE Comprehensive Industrial Hygiene Services

ATLAS provided Industrial Hygiene / Indoor Air Quality Services to the Northrop Grumman Corporation on a renewable term annual contract basis.

St. Augustine Manufacturing Facility

The investigation addressed concerns related to potential worker exposure to hazardous compounds used in various phases and operations of the manufacturing process. The focus was on pre-existing area contamination and manufacturing processes that generate area contaminants.

- **Personnel Monitoring for Methylene Chloride Exposure**
- **Personnel Monitoring for Diisocyanates Exposure**
- **Personnel Monitoring for Lead Exposure**

The scope of the project initially included eight (8) areas in which machining, grinding, welding, paint stripping and blasting, upholstery and electroplating operations were conducted. Additional areas were added to the project including fiberglass and resin composite areas.

ATLAS' approach to the project was designed to provide sound scientific data and corrective action recommendations where required. To meet the project objectives ATLAS conducted initial area inspections of the HVAC system. The inspection was performed in order to evaluate adequacy with regard to the specific activity, the effectiveness of (or the need for) local exhaust ventilation, the chemicals and materials in use in a specific work area or operational process including a review of pertinent MSDS, and a general condition inspection of the work areas during normal operational periods.

Based on the findings of the area inspections and client concerns, ATLAS prepared a sampling work plan to assess surface, airborne and personal exposure concentrations to elements and compounds that were suspected of being present in the work areas. Surface samples were collected using a variety of techniques to address particular needs including wipe samples, bulk samples and vacuum dust. Airborne contaminants were sampled using a variety of sample media depending on the compound and the NIOSH analytical method. Personal samples were collected using a variety of media and sample collection devices based on the compound and analytical method.

Upon completion of the sampling and analysis ATLAS compiled a thorough, clear, concise and comprehensive report documenting and detailing all of the findings and analytical results. ATLAS reviewed and compared the analytical results with OSHA standards where applicable. This allowed the client to directly evaluate regulatory compliance and assess areas of potential liability. The report included a narrative discussion and tabular presentation of the findings divided into sections addressing specific work areas. Based on the findings of the study ATLAS was able to provide specific recommendations to the client allowing them to focus attention on particular areas of concern.

Orlando 407.425.5696

Jacksonville 904.731.0241



Providing Solutions

REPRESENTATIVE PROJECTS

Industrial Hygiene



BANK OF AMERICA Storm Damage and IAQ Impact Studies / Remediation

Multiple Site IAQ Evaluation and Remediation

ATLAS conducted numerous comprehensive building inspections to determine the presence and extent of **mold/fungal infestation and water intrusion** damage due to the storm damage of 2004. The primary purpose was to evaluate the impact on IAQ and to define the scope of remedial action based. The inspection focused on the **building envelope**, structural components, the HVAC systems and building finishes. Conducted basic indoor air quality parameter monitoring, moisture monitoring and air and surface sampling. The services specifically included:

- occupant and facility personnel interviews
- visual inspection of the HVAC system and associated duct work
- visual inspection of accessible interior spaces
- collection of in-situ **moisture measurements** of various building materials, based on field observations and observe damages
- collection and analysis of microbial bulk and air samples
- destructive access openings in wall and other cavities for observation
- photographic documentation of significant findings
- preparation of a **site specific work plan** that defined the scope of the remedial action and specified the general procedures to be used regarding the preparation of the work area, the protection of the workers and the environment, the proper disposal of various identified items, the systematic cleaning and decontamination of various identified items and building components, the controlled demolition and removal of various identified building materials and the clearance of the work area (evaluation of the effectiveness of the remedial action).
- conducted contractor monitoring which included: the supervision of the remediation / cleaning contractor with regard to area preparation, work practices, maintenance of the work area, adherence to the work plan; daily inspection of the work area to ensure proper work practices are employed and maintenance of work area, documentation of daily site activities and a visual inspection of the work areas for the final project clearance.
- conducted post-remediation inspection and sampling which included: moisture monitoring of the affected areas, collection and analysis of microbial surface and air samples and preparation of a final clearance report.

Orlando 407.425.5696

Jacksonville 904.731.0241



Providing Solutions

REPRESENTATIVE PROJECTS

Industrial Hygiene

BANK OF AMERICA

All of these services had to be provided on a premium response basis to assure a minimum disruption to the bank's operational activities. More than 25 separate projects were conducted in the central Florida area in a 4-week period. The projects encompassed main lobbies, offices, ATM facilities, drive-through teller facilities and computer and administration centers.

Orlando 407.425.5696

Jacksonville 904.731.0241



Providing Solutions

© All rights reserved. No part of this work may be reproduced without the written permission of ATLAS Scientific Technologies, Inc., except for use at the single facility and by the party for who it was provided.

REPRESENTATIVE PROJECTS

Industrial Hygiene



VARIOUS PROPERTY MANAGEMENT / INSURANCE COMPANIES

Indoor Air Quality Consulting

ATLAS developed a very practical approach for the evaluation and resolution of Indoor Air Quality issues. This approach has been used to address the mold issues that face the insurance and property management industry and has resulted in significant savings to our clients. ATLAS' approach addresses the initial investigation, public relations, contractor activities and the overall program development and management. ATLAS has executed more than 175 projects under this program for the insurance and property management clients listed below:

Insurance Companies	Property Management Companies	
American Strategic Insurance	BAT Management	J.A. Jones Management Services
Amica Insurance	CASTO Southeast	Liberty Property Trust
Auto Owners Insurance	Coldwell Banker	Meridian Management
Farm Bureau	Commercial Realty Consultants	Palatka Housing Authority
Hanover Insurance Company	Flagship Property Management	The Phylmar Group *
Liberty American Insurance	Florida Growth Services, Inc.	Regency Realty Corporation
Nationwide Insurance	Gate Petroleum	Trammell Crow Residential Services
State Farm Insurance	Grand Avenue Economic Commission	

The services included the development of management programs that address the acquisition and general management of properties, as well as issues including routine maintenance, janitorial practices, responding to IAQ / mold concerns, public relations, staff training, preventative practices, initial site evaluations, sampling, remediation and contractor management. Through the development and implementation of this approach, IAQ / mold issues are resolved in a routine manner without unwarranted concern or disruption of the normal operations.

A specific project example under this client / service category is The Phylmar Group. Phylmar provides risk management service to national clients with multi-site facilities. ATLAS is under contract with Phylmar to service all client needs throughout the southeastern United States. Under this contract, ATLAS has conducted IAQ / mold investigations, prepared remedial action work plans, secured and managed contractor services and provided final inspection and clearance sampling at numerous General Electric – GE Modular facilities and the Nestles' distribution center for South Florida.

Orlando 407.425.5696

Jacksonville 904.731.0241



Providing Solutions

REPRESENTATIVE PROJECTS

Environmental

A brief list of environmental projects completed by **ATLAS** is provided below.

<i>Client / Location</i>	<i>Services Provided</i>
UPS Trucking Orlando, Florida	Provided environmental engineering and professional services for the evaluation of all central Florida facilities regarding compliance to industrial wastewater regulations. Services included site inspections, evaluations, design, permitting, developing compliance plans and managing construction.
Bradford County Schools Bradford County, Florida	<p>Provided supervision of and coordinated response actions for several accidental discharges of chemicals (mercury, pesticides, fertilizers, and photographic development chemicals) and diesel fuel. More than <u>45 monitoring wells</u> were installed and periodically monitored. Developed and directed the clean-up and removal activities. Provided all interaction with DOT and state environmental officials and all required documentation and reporting.</p> <p>Conducted closure of underground storage tank systems at the maintenance and vocational schools. This included <u>groundwater</u> and soil sampling, contamination assessment, data evaluation, preparation of CARs and RAPs. Prepared remedial action bid specifications, supervised contractor activities and provided all regulatory interface, documentation and reporting. Provided design and project management for the replacement tank systems and upgrades to additional UST sites in order to meet regulatory requirements.</p>

Major environmental projects completed by **ATLAS** follows.

Orlando 407.425.5696

Jacksonville 904.731.0241



Providing Solutions

REPRESENTATIVE PROJECTS

Environmental



DUVAL COUNTY SCHOOL BOARD Comprehensive Environmental Services

ATLAS served as the School Board's Consultant under a renewable annual contract for Environmental & Industrial Hygiene Consulting for **7 years**. The services required a **multi-disciplined approach** to diverse health, safety and environmental issues that impact the school system. During the course of these contracts, Atlas provided an extensive range of services that encompassed everything from responding to DCSB staff questions to developing and implementing complex county-wide sampling and assessment programs. A brief list of example projects include:

Indoor Air Quality Investigations

Conducted IAQ investigations at more than 12 facilities.

Hazardous Waste Stream Identification and Assessment

Assessed laboratories, skill centers, maintenance facilities and representative schools. Characterized waste streams, interfaced with regulatory agency and developed **hazardous waste management program for DCSB**.

Chemical Products/Materials Management Program

Through questionnaires and site inspections, compiled a comprehensive inventory of all stored and used chemical products. Suggested product substitution to eliminate regulated materials. Developed a **computer database** that provides immediate access to every school's inventory.

Petroleum Products Storage Tank Management Program

Conducted records search and site visits to identify the location, contents and status of more than 250 storage tanks. Developed a **system-wide computer database** to inventory, monitor regulatory status, update and track all storage tanks at **every DCSB facility**.

County-wide Water System Sampling and Assessment

Collected more than **2,500 water samples** and provided state-required reporting within budget and a strict schedule.

County-wide Radon Sampling and Reporting

Inspected over 150 school facilities and placed approximately 5,000 radon measurement devices within the allotted time frames and the pre-established budgetary requirements.

Ground Water Assessment and Closure

Conducted the decommissioning of numerous underground storage tank systems at various DCSB facilities in accordance with applicable federal **hazardous waste regulations**.

Orlando 407.425.5696

Jacksonville 904.731.0241



Providing Solutions

REPRESENTATIVE PROJECTS

Environmental



BURGE & BURGE Comprehensive Industrial Hygiene & Environmental Consulting

ATLAS provided **IAQ, industrial hygiene** and **environmental** studies to this private law firm over the past **five years**. The most extensive project consisted of a comprehensive Environmental Contamination Assessment Study encompassing approximately **250 acres of occupied residential properties** and was conducted over a 3-year period. The investigation addressed concerns of potential sub-surface (soil and groundwater) petroleum contamination that had migrated from a fuel terminal adjacent to the study site. The objective of the study was to determine the current condition of the sub-surface environment and to conduct **modeling with regard to the distribution of contaminants** in the groundwater and the ambient air. The scope of the contamination assessment activities consisted of a regulatory records review, evaluation of previous sampling and site activities, design and implementation of a sampling strategy, and development of conclusions based on the findings. ATLAS' staff members served as Technical Experts to the client.

ATLAS conducted an extensive document review consisting of the technical evaluation of existing Contamination Assessment Reports, Contamination Assessment Plans, Remedial Action Plans, regulatory correspondence, and private correspondence dating back to 1986, consisting of approximately 4,000 pages. The findings of the document review allowed ATLAS to develop a hypothesis regarding the extent and probable migration of the contamination. A sampling plan was developed to address sub-surface sampling and evaluation. The field work included the following:

Soil Sampling

The soil sampling techniques utilized during the study included soil screening with an Organic Vapor Analyzer / Flame Ionization Detector (OVA/FID) at 65 separate areas, split spoon sampling of various soil strata at 15 locations including an OVA screening, and Soil Gas sampling utilizing Post Run Tubing (PRT) Direct Push Borings at 20 separate locations including 50 OVA/FID measurements.

Groundwater Sampling

Groundwater evaluation activities consisted of the installation and sampling of three new monitoring wells in locations determined by the records review and field observations, installation and sampling of 5 temporary monitoring wells, sampling and evaluation of 42 previously installed monitoring wells, and sampling and evaluation of 25 private irrigation wells.

Geographic Survey

Conducted a geographic survey relative to 33 installed monitoring wells located within the study site. This survey was conducted to determine precise locations and elevations of study wells. Upon completion of the sampling and analysis, ATLAS compiled a thorough, clear, concise and comprehensive report

Orlando 407.425.5696

Jacksonville 904.731.0241



Providing Solutions

REPRESENTATIVE PROJECTS

Environmental

BURGE & BURGE

documenting and detailing all of the findings and analytical results. ATLAS reviewed and compared the analytical results with applicable state and federal regulations with regard to established clean-up criteria and health exposure data. These results were used to develop an updated contamination plume drawing of the study site for numerous petroleum contaminants. The records review, analytical studies and corresponding modeling allowed for a sound evaluation of the potential exposure issues associated with the residential properties. This allowed the Client to directly evaluate regulatory compliance and health risks and to assess areas of liability. Ultimately, 33 individual residential properties were determined to be affected by the discharge of contaminants from the fuel terminal. A settlement was reached.

Indoor Air Quality

ATLAS conducted several indoor air quality investigations in residential and office buildings. The investigations have included records review, site inspections, responding to occupant complaints, sample collections, data evaluation and preparation of reports presenting findings and expert's opinion for pending litigation or settlement. Sampling issues have included mold, bacteria, chemicals, and content related constituents.

Industrial Hygiene Consulting

ATLAS served as technical consultant in cases involving chemical exposure issues for local industries and a national railroad. Services provided by ATLAS included scientific literature review and sampling for chlorine, PCB, petroleum solvents, fungi, silica, carbon dioxide, carbon monoxide, and other parameters. Sampling events were conducted in buildings and aboard operating trains to evaluate the 8-hour TWA exposure for railroad employees. Results were evaluated against OSHA PELs and other relevant toxicological data.

Orlando 407.425.5696

Jacksonville 904.731.0241



Providing Solutions

REPRESENTATIVE PROJECTS

Environmental



AIR KAMAN

Comprehensive Environmental Services

ATLAS has provided **Comprehensive Environmental Consulting** Services to Air Kaman on a term contract basis since 1998. Air Kaman is the jet fuel supplier for both private and commercial aircraft at the Jacksonville International Airport (JIA) and also maintains a facility at the Cecil Commerce Center (formerly NAS, Cecil Air Field, Jacksonville). Some examples of projects that ATLAS has conducted for Air Kaman include:

Development of a multi-facility Spill Prevention Control and Countermeasure Plan (SPCCP)

ATLAS prepared SPCC Plans for two separate facilities in accordance with 40 Code of Federal Regulations (CFR) 112.7. The preparation of these plans involved interviews with available administrative and maintenance personnel to obtain information regarding petroleum product inventory, current fueling procedures, site-specific historical information, and any pertinent documentation. These plans were prepared for the JIA and Cecil facilities. The JIA facility has a capacity of 950,000 gallons of fuel and the Cecil facility has a capacity of 60,310 gallons. The services included the preparation of SPCC Plans for the main fuel farm and secondary fuel farm, and integrating these plans into one document. The services for the Cecil facility consisted of preparing a SPCC plan at the completion of the installation and construction of a new fuel farm.

Environmental Engineering - Design and Permitting Services

ATLAS designed and prepared permits for an aircraft wash rack wastewater collection and treatment system. The system was installed adjacent to the Client's hanger. The design incorporated an existing concrete pad and included the design and construction of an industrial wastewater collection and treatment system including an Oil Water Separator (OWS). The design and all associated permit applications were prepared and submitted to the local regulatory agency for approval prior to the construction. The permitting of the system effluent to the sanitary sewer system was included.

Removal of Waste Oil and Petroleum Underground Storage Tanks (UST)

ATLAS has provided complete turn-key environmental consulting services for the removal of two 550 gallon waste oil USTs and two 20,000 gallon fuel USTs. **ATLAS** conducted contamination / closure assessments, developed the removal procedure guidelines and bid forms, evaluated contractor bids, conducted all over sight of the contractor and State of Florida required monitoring. ATLAS was responsible for all regulatory interface and providing all required close-out documentation.

Phase I and Phase II Environmental Site Assessments

ATLAS conducted a Phase I and Phase II Environmental Site Assessment (ESA) for the Client of an airplane hanger previously operated by one of its subsidiary companies. The Phase I ESA findings indicated potentially contaminated soil related to a hydraulic lift and an oil water separator (OWS) drain line. Phase II ESA activities consisted of the collection of soil samples, installation of wells and collection of groundwater samples and performance of a dye study to evaluate fate of the OWS discharge.

Orlando 407.425.5696

Jacksonville 904.731.0241



Providing Solutions

REPRESENTATIVE PROJECTS

Environmental



Dollar Rent-A-Car Comprehensive Environmental Services

ATLAS provided a wide range of environmental consulting services on an on-going basis for multiple regional facilities. The services included contamination assessments, storage tank closures, emergency response to petroleum spills, environmental site assessments, remedial action plans, site sampling, ecological studies and wastewater treatment system design and environmental permitting.

Regulatory Interface

ATLAS negotiated civil environmental (DEP) penalties on behalf of the client. Assisted Client in entering a “short form consent order” to resolve all regulatory issues. Achieved a reduction in the penalty from \$20,000 to \$3,200.

Regional Storage Tank Management Program

ATLAS conducted audits at all 27 Central Florida facilities to determine regulatory compliance status with regard to petroleum storage tank systems. As a result of the findings, ATLAS developed a system-wide petroleum product management program for underground and above ground fuel tanks.

Environmental Program Management

ATLAS reviewed Client’s operational activities with regard to hazardous waste, industrial wastewater and other environmental regulations and developed several compliance programs. The programs were fully implemented and the Client’s staff was trained in the effective execution, record keeping and routine monitoring requirements.

Industrial Wastewater System Design, Permitting and Installation

ATLAS designed, permitted and constructed automobile washing and water recycle systems for two airport facilities and one off-site facility to comply with FDEP FAC 62.660. This included engineering design, preparation of required engineering report, associated drawings and permit application. Services also included monitoring construction activities and recycle equipment assembly and installation. ATLAS interfaced with regulatory officials of various agencies throughout the process and secured construction and operational permits from FDEP or other appropriate agency.

Emergency Response

ATLAS served as first responder to a 500-gallon oil spill. Provided initial and final contamination assessment, directed response contractor throughout the entire cleanup effort. As a result of the quick response, discharge to the adjacent surface water from the retention pond was avoided and only minimal soil contamination and no groundwater contamination occurred. All contaminated materials were properly containerized, manifested and removed from the site. ATLAS prepared and submitted all forms, notifications and documentation to the local and state regulatory agencies.

Underground Storage Tank Closure

The project initially consisted of the routine closure of a 5,000-gallon underground gasoline storage tank. During the Initial Remedial Action (IRA) approximately 278 cubic yards of soil were identified as excessively contaminated. The soil was removed from the site for thermal treatment. ATLAS conducted a Contamination Assessment and prepared the CAR, RAP and managed all additional site activities from the “monitoring only” stage to “no further action”.

Orlando 407.425.5696

Jacksonville 904.731.0241



Providing Solutions

REPRESENTATIVE PROJECTS

Litigation / Expert Witness



Industrial Hygiene, IAQ Expert Witness/ Litigation Services

Orange County	Vazquez & Tosco, LLP
Burge & Burge	Veterans Administration
Brown, Terrell & Hogan	Kubicki Draper, PA
Alan M. Foody	Mitchel & Associates, Inc.
Anderson and Howell	Parrish & Fredericksen
Brennan, Manna & Diamond	Rissman, Weisberg, Barrett, Hurt, Donahue & LcLain
Deciccio & Johnson	Rywant, Alvarez, Jones, Russo & Guyton
Greenberg Traurig LLP	Schutt, Humphries, Schmidt & Burnett
Jacobs & Associates	Suddath Companies
Johns Eastern Company	Wettermark and Holland
Kingsford and Rock, P.A.	Whittaker, Stump, Webster & Miller
Lee, Black, Hart and Rouse, P.C.	

ATLAS has provided Asbestos, **IAQ** and **industrial hygiene expert witness and litigation** services to numerous private law firms over the past **16 years**. The law firms have represented building owners, operators and occupants from the private and public sectors. Atlas' services have been used to objectively evaluate the merit of the litigation through scientific study and evaluation. Atlas has been approved as an expert in civil and federal courts. Atlas' typical services include:

- Document review
- Technical merit evaluation
- Support IAQ studies and investigations
- Air and other sampling
- Literature and regulatory review
- Contaminant exposure modeling
- Technical issue explanation to attorneys and clients
- Preparation of experts report
- Preparation of trial exhibits
- Deposition testimony
- Trial testimony.

The scope of many litigation-related **IAQ contamination** assessments consist of a regulatory records review, evaluation of previous sampling and site data, design and implementation of a sampling strategy, and development of conclusions based on the findings.

ATLAS conducted several indoor air quality investigations in residential, office buildings and other occupational work places. The investigations have included records review, site inspections, responding to occupant complaints, sample collections, data evaluation and preparation of reports presenting findings and expert's opinion for pending litigation or settlement. Sampling issues have included mold, bacteria, solvents, organic and inorganic chemicals, and product related constituents.

Orlando 407.425.5696

Jacksonville 904.731.0241



Providing Solutions

REPRESENTATIVE PROJECTS

Litigation / Expert Witness

Industrial Hygiene Consulting

ATLAS has served as technical consultant in cases involving IAQ and chemical exposure issues for many local industries, building owners, commercial work sites and a national railroad. Services provided by ATLAS have included scientific literature review, research, general consulting, testifying and sampling for chlorine, PCB, petroleum solvents, fungi, silica, carbon dioxide, carbon monoxide, roofing tars and other parameters. Sampling events have been conducted in buildings and aboard operating trains to evaluate the 8-hour TWA exposure for railroad employees. Results are evaluated against OSHA PELs and other relevant toxicological data.

Orlando 407.425.5696

Jacksonville 904.731.0241



Providing Solutions

© All rights reserved. No part of this work may be reproduced without the written permission of ATLAS Scientific Technologies, Inc., except for use at the single facility and by the party for who it was provided.



Asbestos Laboratory

Orlando 407.425.5696

Jacksonville 904.731.0241



Providing Solutions

© All rights reserved. No part of this work may be reproduced without the written permission of ATLAS Scientific Technologies, Inc., except for use at the single facility and by the party for who it was provided.

IN-HOUSE LABORATORY

Asbestos

ATLAS maintains an “in-house” NVLAP accredited Asbestos Laboratory at our Jacksonville location.

Our lab participates in the National Institute of Standards and Technology (NIST) / National Voluntary Laboratory Accreditation Program (NVLAP) Proficiency Analytical Testing (PAT) Program, and has earned full accreditation for bulk and airborne asbestos analysis.



Accreditation by NVLAP is mandatory for all AHERA analysis. Accreditation requires consistent, successful proficiency testing and full, on-site laboratory evaluation by NIST inspectors. The laboratory must maintain a fully-implemented quality control program.

Current asbestos analyses include:

Lab Code	Description of Analysis	Analysis Type
PLM	EPA/600/R-93/116	Polarized Light Microscopy
PLM – Point Count	Chatfield 400	Polarized Light Microscopy
PCM	NIOSH 7400	Phase Contrast Microscopy
TEM – AIR	NIOSH 7402	Transmission Electron Microscopy
TEM – AIR	AHERA	Transmission Electron Microscopy
TEM – AIR	EPA Level II	Transmission Electron Microscopy
TEM – BULK	Chatfield	Transmission Electron Microscopy
TEM – BULK	EPA/600/J-93/116	Transmission Electron Microscopy
TEM – BULK	Dropmount (Qualitative)	Transmission Electron Microscopy

In addition to standard service time, we also provide fast sample turnaround time (4 – 6 hours) on PLM / PCM analyses. Our services are competitively priced. We offer a 10% Quantity Discount for 50-100 samples / layers per month.

Orlando 407.425.5696

Jacksonville 904.731.0241



Providing Solutions

IN-HOUSE LABORATORY

Mold

ATLAS maintains an “in-house” Mold Spore Identification Laboratory at our Jacksonville location.

Our lab participates in the American Industrial Hygiene Association’s Environmental Microbiology Proficiency Analytical Testing Program (EMPAT) for Direct Exam.

EMPAT proficiency is the current industry accepted standard for laboratories performing mold identification. The laboratory must maintain a fully-implemented quality control program.

Current mold analyses include:

Lab Code	Description of Analysis	Analysis Type
FUNGI – AIR	Air-O-Cell	Total Fungal Spore Count including pollen and background density
FUNGI – AIR	Cyalex	Total Fungal Spore Count including pollen and background density
FUNGI – AIR	Burkard	Total Fungal Spore Count including pollen and background density
FUNGI – AIR	Allergenco	Total Fungal Spore Count including pollen and background density
FUNGI – AIR	Micro-5	Total Fungal Spore Count including pollen and background density
FUNGI – AIR	Relle	Total Fungal Spore Count including pollen and background density
FUNGI – SURFACE	Tape Lift	Identification of Fungal Structures by Direct Examination
FUNGI – SURFACE	Swab	Identification of Fungal Structures by Direct Examination
FUNGI – SURFACE	Bulk	Identification of Fungal Structures by Direct Examination

In addition to standard service time, we also provide fast sample turnaround time (4 – 6 hours) on mold analyses. Our services are competitively priced. We offer a 10% Quantity Discount for 50-100 samples / layers per month.

Orlando 407.425.5696

Jacksonville 904.731.0241



Providing Solutions